

# Bushmead Primary School

Bushmead Road, Eaton Socon, St Neots. PE19 8BT  
Web: [www.bushmead.cambs.sch.uk](http://www.bushmead.cambs.sch.uk) Tel: 01480 375375

Head Teacher: Mr Steve Down  
Deputy Head Teacher: Mr Mark Leonard

12 09 25

Dear Parents / Carers

We are pleased to inform you that our visit to Stibbington, for a World War Two Evacuee trip, has been confirmed for **Thursday 9<sup>th</sup> October 2025**. It will take place during normal school hours but we do ask that your child is at school by 08:40, at the latest, to ensure we can leave promptly.

On the morning of the visit, we will provide your child with a name of a child who was evacuated from London to Stibbington in the 1940s. They will role-play as that child throughout the visit and to help them with this, we would like you to arrange an appropriate outfit for them. Additionally, there are instructions for making a gas mask box, which we would like children to make at home. For costume ideas, please see the costume ideas sheet below.

Please be aware that part of the trip involves a walk from Wansford Railway Station to Stibbington, down the side of fields, and we would therefore ask that you consider footwear carefully.

Children will need to bring a packed lunch, including a drink, with them.

For this visit to go ahead, we will require a donation of £17.50 submitted via ParentPay.

If you have any questions, please do not hesitate to ask.

Kind regards,

Miss Edwards  
Miss Ritchie

Bushmead  
Primary School



High Expectations

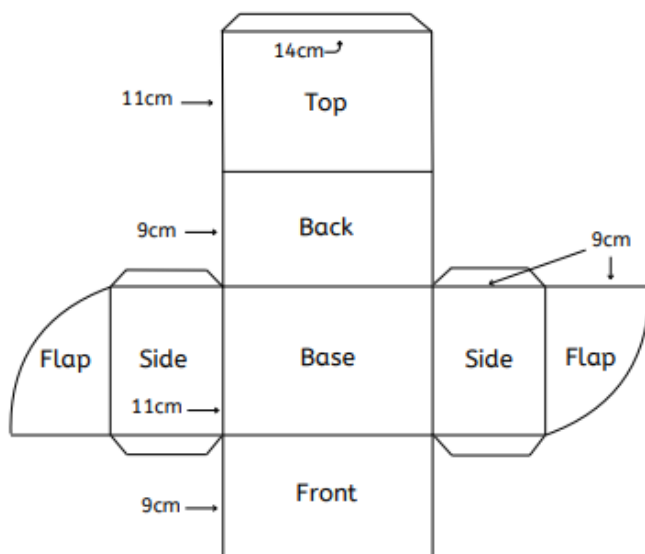
High Achievements

Rich and Varied Curriculum

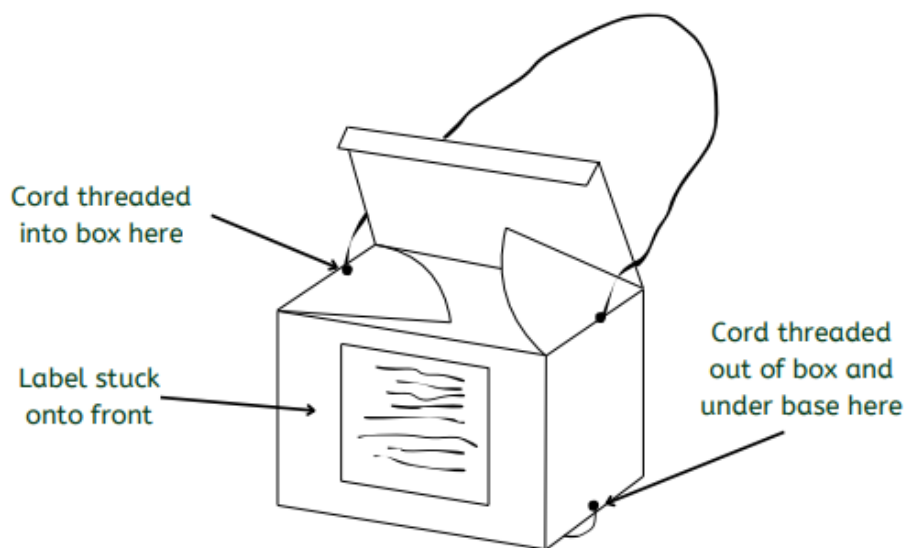
## Evacuation Day Gas Mask Box Template



Stiff card, of cereal box type, will be needed to make your gas mask box and a one metre length of cord will be needed for each one.



Your finished gas mask box should look like this:



## Evacuation Day Costume Ideas



Children who are being evacuated to Stibbington for the day should try to dress like children did in the 1940s. The notes below give some suggestions about what you might wear.

### Clothes

#### Everyone should wear:

Shoes, boots or wellies, (not trainers), a woollen jumper or cardigan (not sweatshirt), shirt or blouse (not t-shirt).

#### Boys

Should wear a cap or woollen hat and they should have knee-length shorts or trousers tucked into knee length socks.

#### Girls

Should wear a beret, headscarf or woollen hat and a knee-length dress or skirt.

On cold or wet days everyone should have a warm or waterproof coat. This is important because the programme for the day includes a walk through the "wartime countryside". A modern coat will be fine if you don't have an "old style" one. For very cold days scarf, gloves and thick socks are useful too.

### Other things to bring

- A small "old style" doll or cuddly toy such as a teddy bear.
- or
- Make yourself a parcel which you can pretend contains your favourite toys that you have chosen to take with you when you are evacuated. The parcel should be quite small, e.g. shoe box or ice cream container size, and it should be wrapped in brown paper and tied with string.

***These are the only things you will be allowed to take with you when you are evacuated!***